



FERROVIAL AGROMAN
LAING O'ROURKE JV

Northern Line Extension

Battersea Site

Community Liaison Group

12.10.16

Delivering the Northern line extension with

ferrovial
agroman



MAYOR OF LONDON



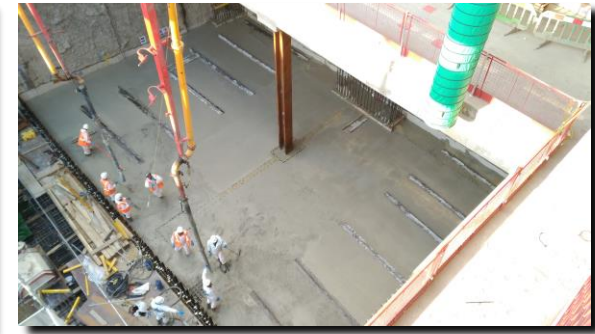
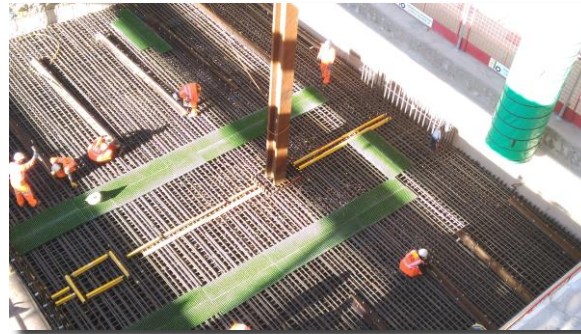
TRANSPORT
FOR LONDON



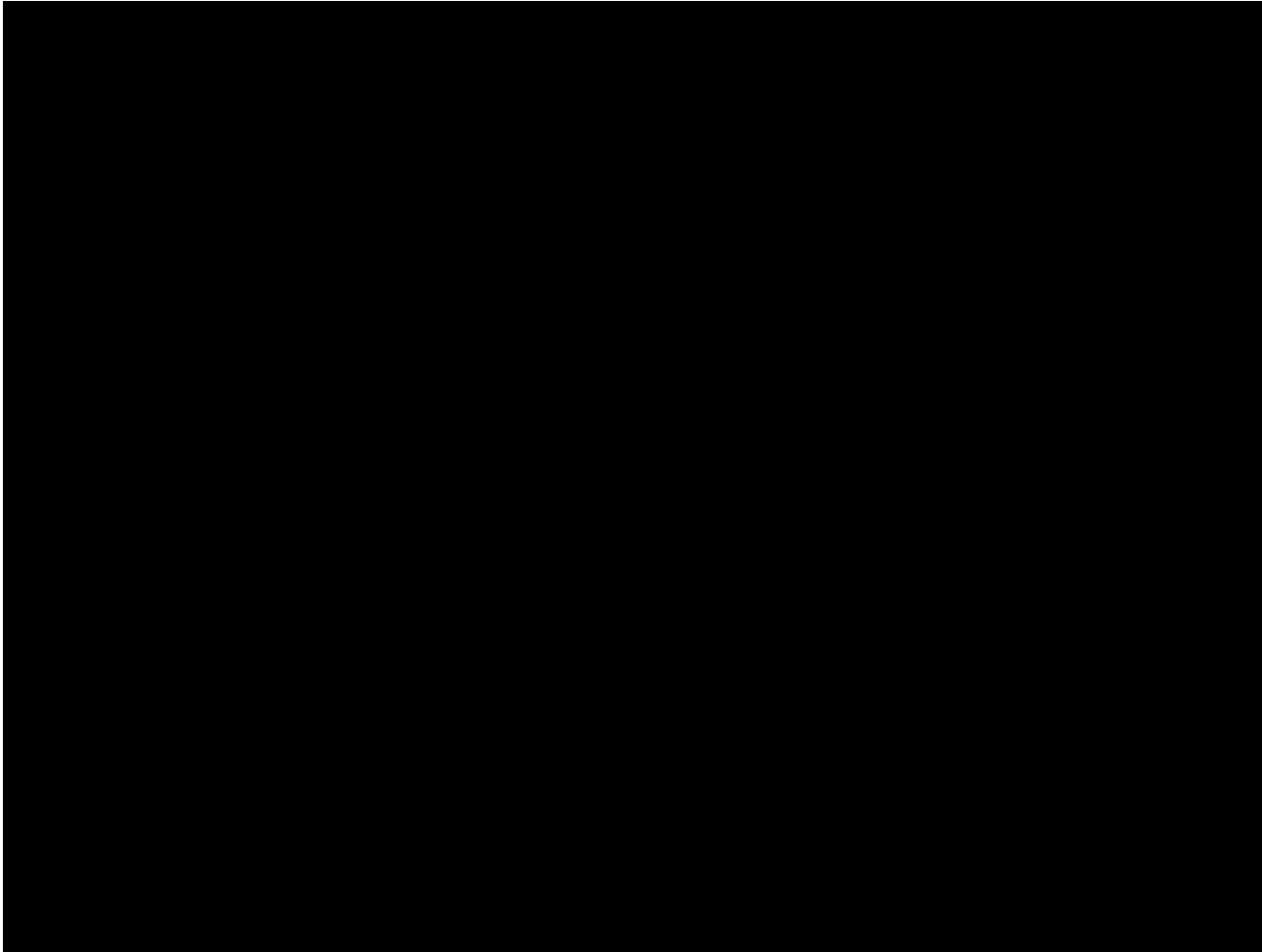
Battersea Update July – Oct 2016

✓ Crossover Box

- 80% of the excavation complete
- Completion of all retaining concrete beams inside around the box
- Installation of all temporary steel struts
- 33% of the concrete base slab complete.



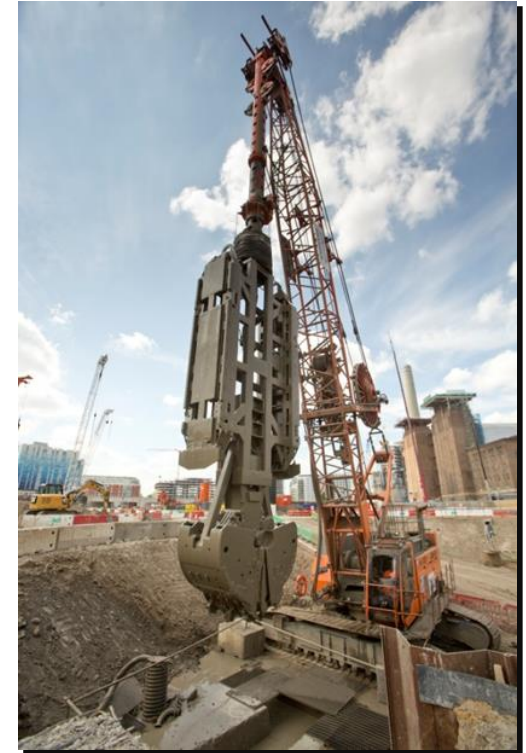
Battersea Time-lapse Aug – Sept 2016



Battersea Update July – Oct 2016

✓ Station Box

- 50% of the piling foundations for station columns complete
- 40% of the concrete wall perimeter complete
- Commencement of concrete beam on the west side tying the concrete walls

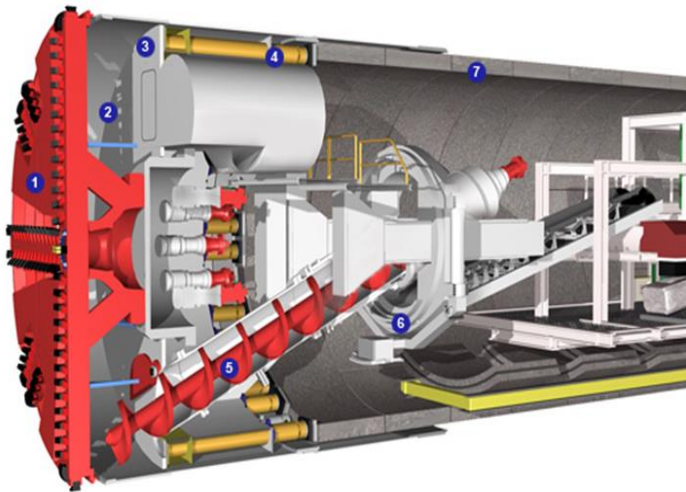


Battersea Update July – Oct 2016

✓ Tunnel Boring Machines

Arriving since September

- Cuttingwheel
- Shields
- Engine main drives
- Erectors



TBM PARTS

- 1 – Cutting wheel
- 2 – Muck chamber
- 3 – Face Pressure
- 4 – Propulsion Force
- 5 – Screw
- 6 – Erector
- 7 – Ring build



NLE Environment and Sustainability

1 BARGE = 50 WAGONS



Excavated material is being sent to Goshems Farm by barge to restore this formal landfill site to high grade arable farm land. NLE have taken wagons off the streets of London, reducing local contaminants in the air.

TOTAL BARGES **213** BARGES

WAGON JOURNEYS AVOIDED **23,365**
WAGONS OFF THE STREETS

TOTAL MUCK AWAY **210,290**
TONNES OF SPOIL

EMISSIONS SAVINGS **357** Tonnes of CO2



NLE Environment and Sustainability



FERROVIAL AGROMAN
LAING O'ROURKE JV

This is the volume that 357 tonnes of Carbon Dioxide would occupy.

357 tonnes of CO₂



57.6 m

357 tonnes CO₂ = 31.7% of Battersea Power Station Capacity



NLE Environment and Sustainability

Indirect Benefits



Safer Roads in London

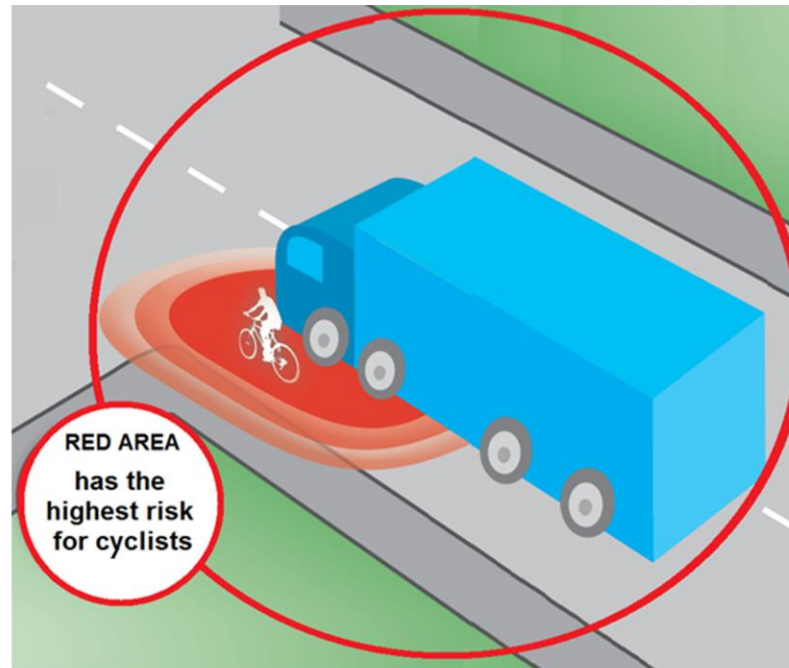
Large lorries are involved in half of the cyclist deaths in London

The Northern
Line Extension

has **avoided**
11,250 wagons in
the streets



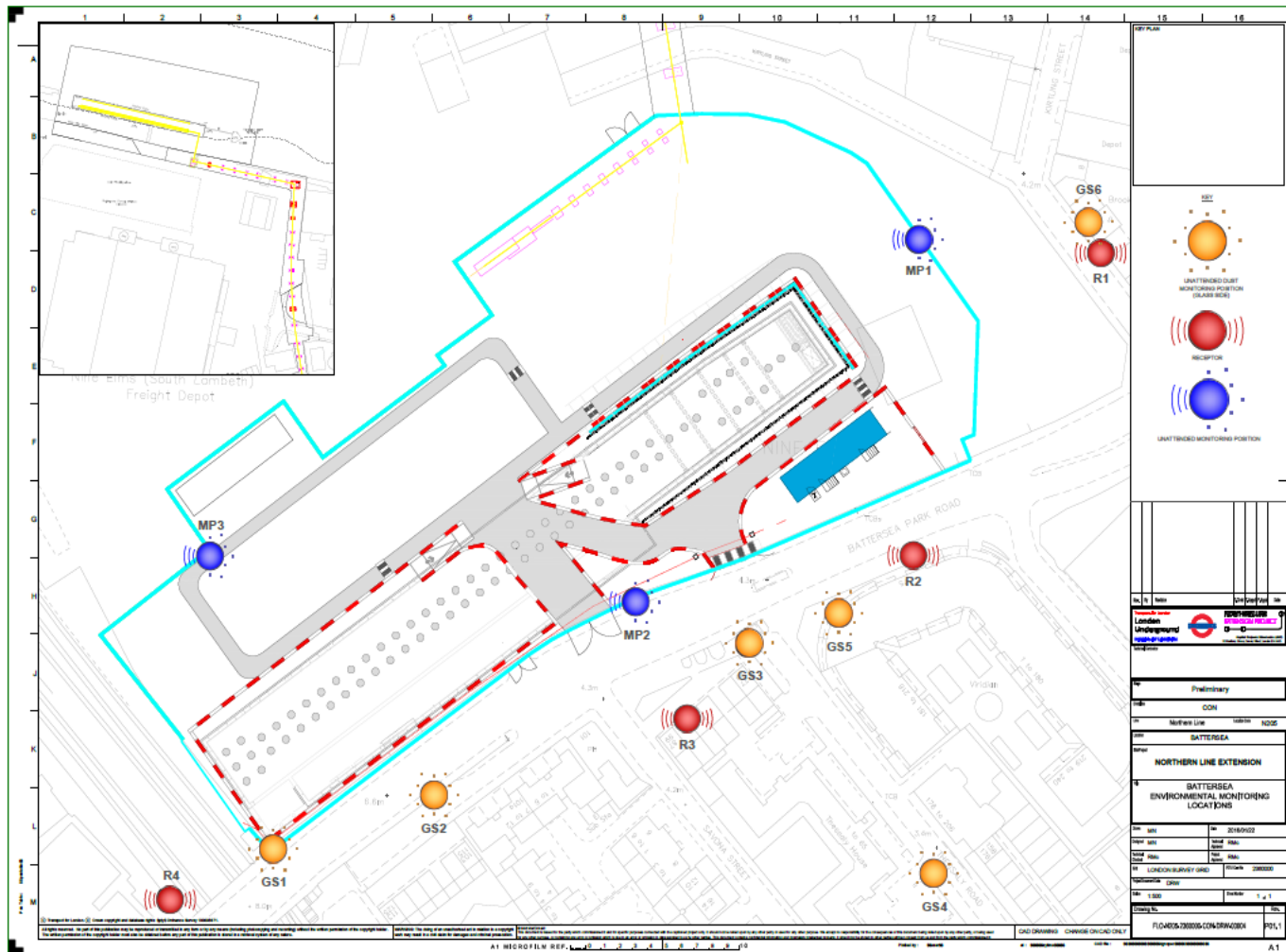
270,000 left turns
during the wagon
journeys



Monitoring Locations Battersea



FERROVIAL AGROMAN
LAING O'ROURKE JV



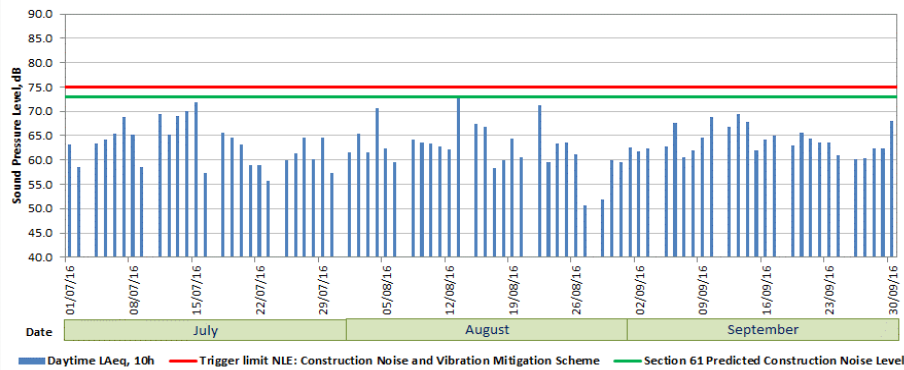
Monitoring Jul – Oct 2016

Environmental Monitoring

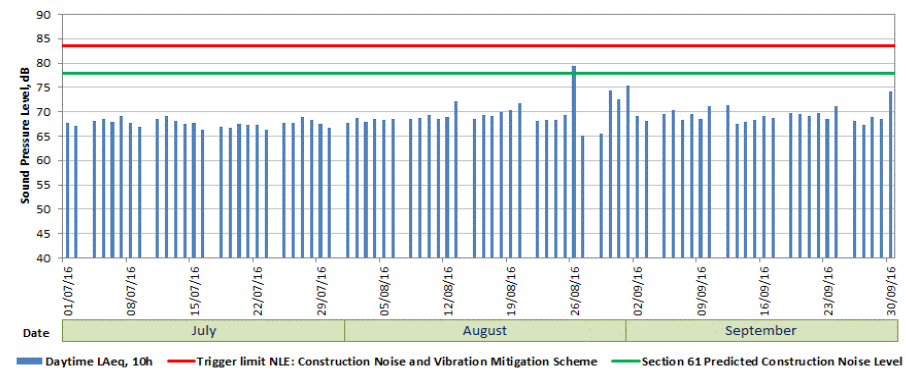


FERROVIAL AGROMAN
LAING O'ROURKE JV

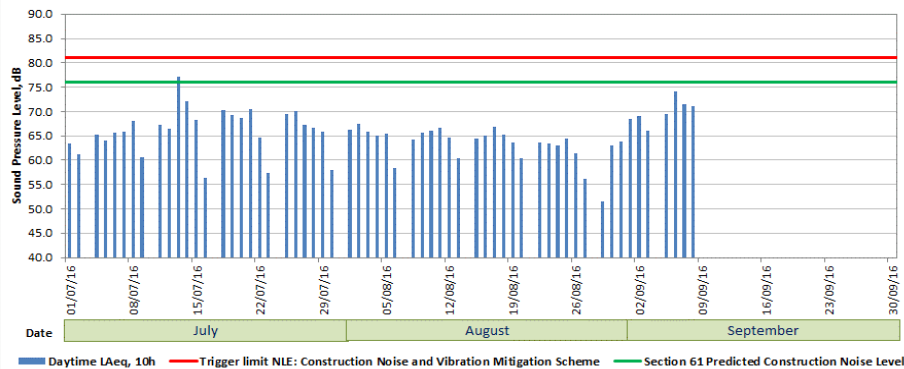
Noise Time History: Receptor R1 - Kirtling Street



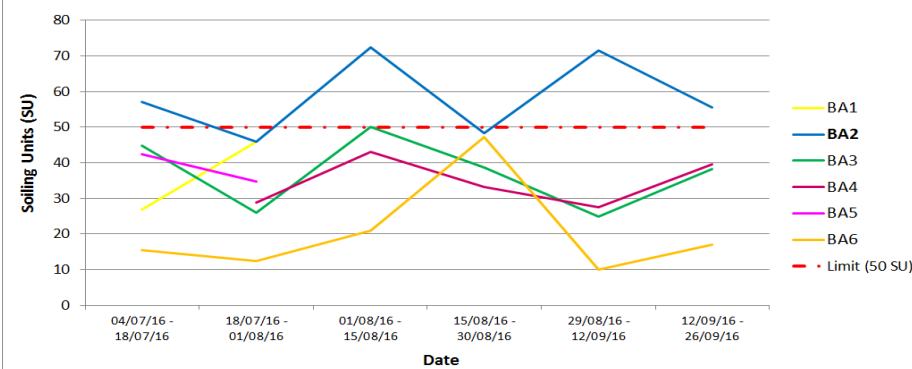
Noise Time History: Receptor R2 - Viridian Apartments & R3 - Savona Estate



Noise Time History: Receptor R4 - Cats and Dogs Home



Battersea Site - Dust deposition rates (Glass Slides)



15th August: Exceeded late night noise trigger. Road improvements from 13th to 23rd August including overnight works on weekdays. No other exceedances recorded.

Potential dust nuisance at receptors on Battersea Park Road (**Glass Slides 2 & 3**), but unlikely at other positions surrounding the Site. Dust nuisance likely affected by road traffic on Battersea Park Road.



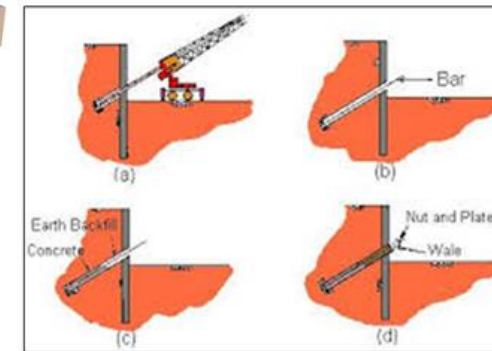
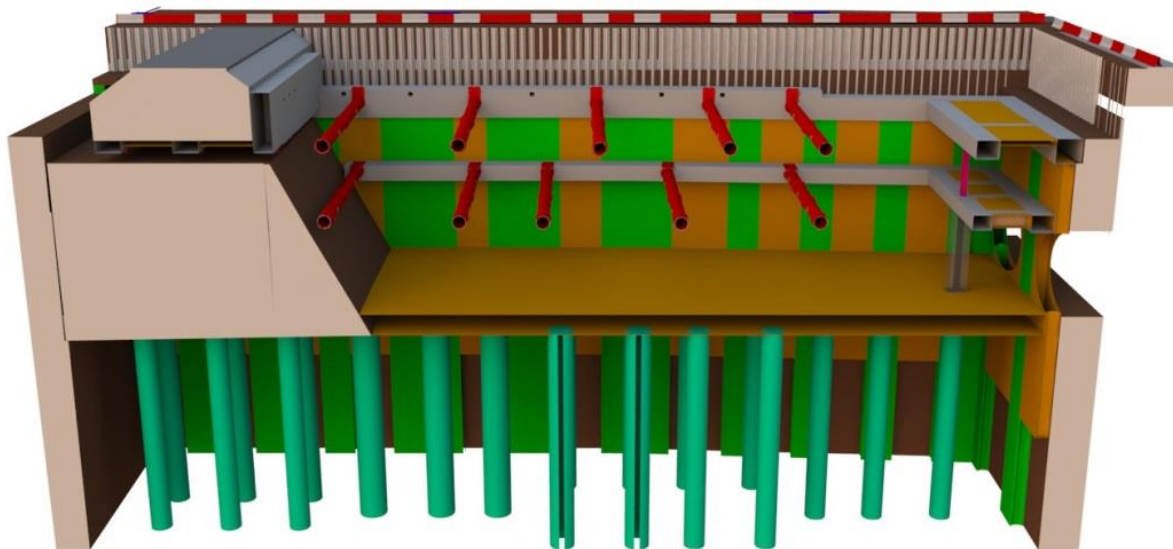
Battersea Update Oct – Jan 2017



FERROVIAL AGROMAN
LAING O'ROURKE JV

Battersea Crossover Box:

- Concrete base slab
- Soil nailing
- Internal bridge

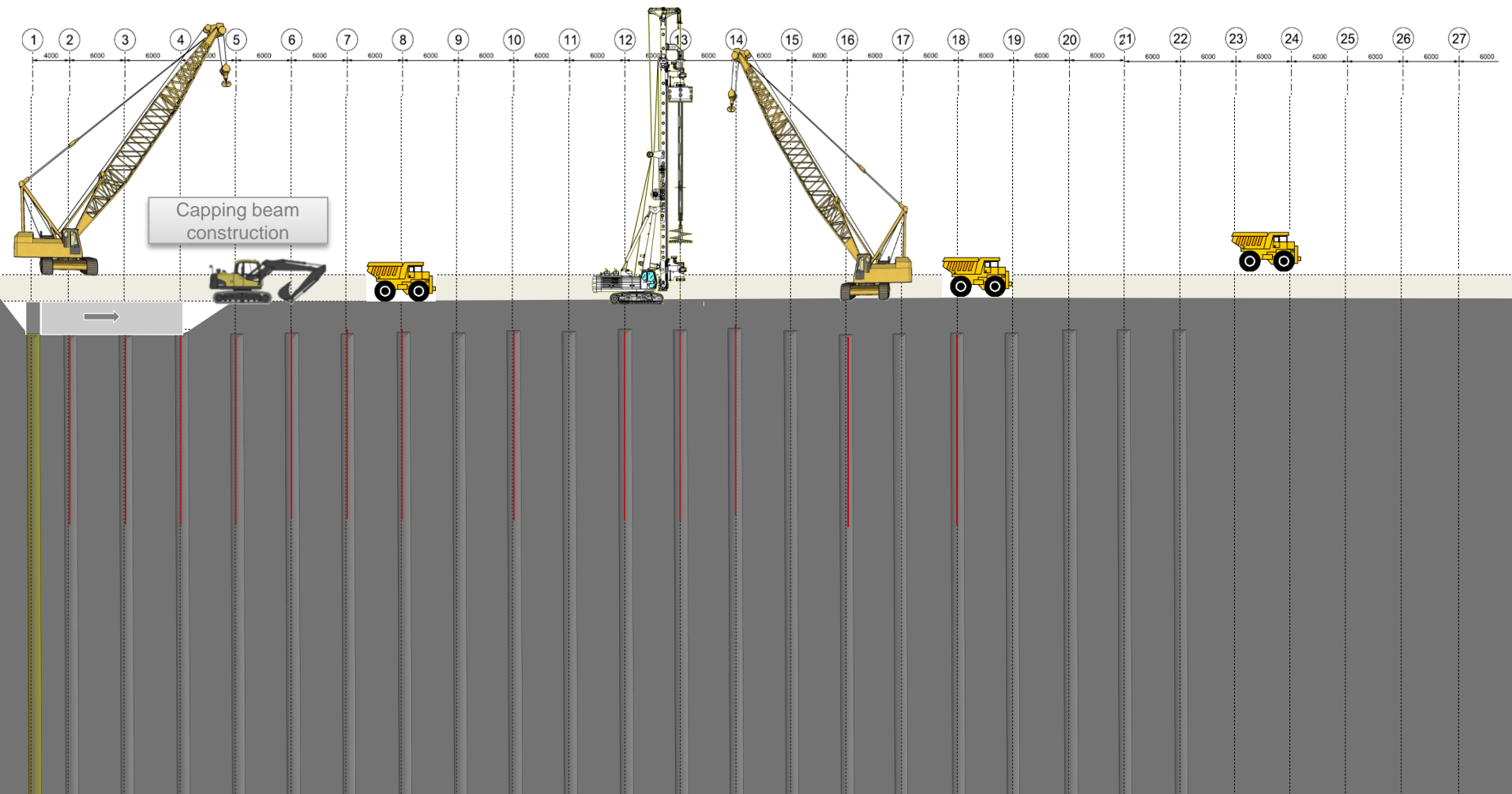


Battersea Update Oct – Jan 2017



Battersea Station Box:

- Diaphragm walling and piling.
- Capping beam



Battersea Update Oct – Jan 2017

Tunnel Boring Machines Set-Up:



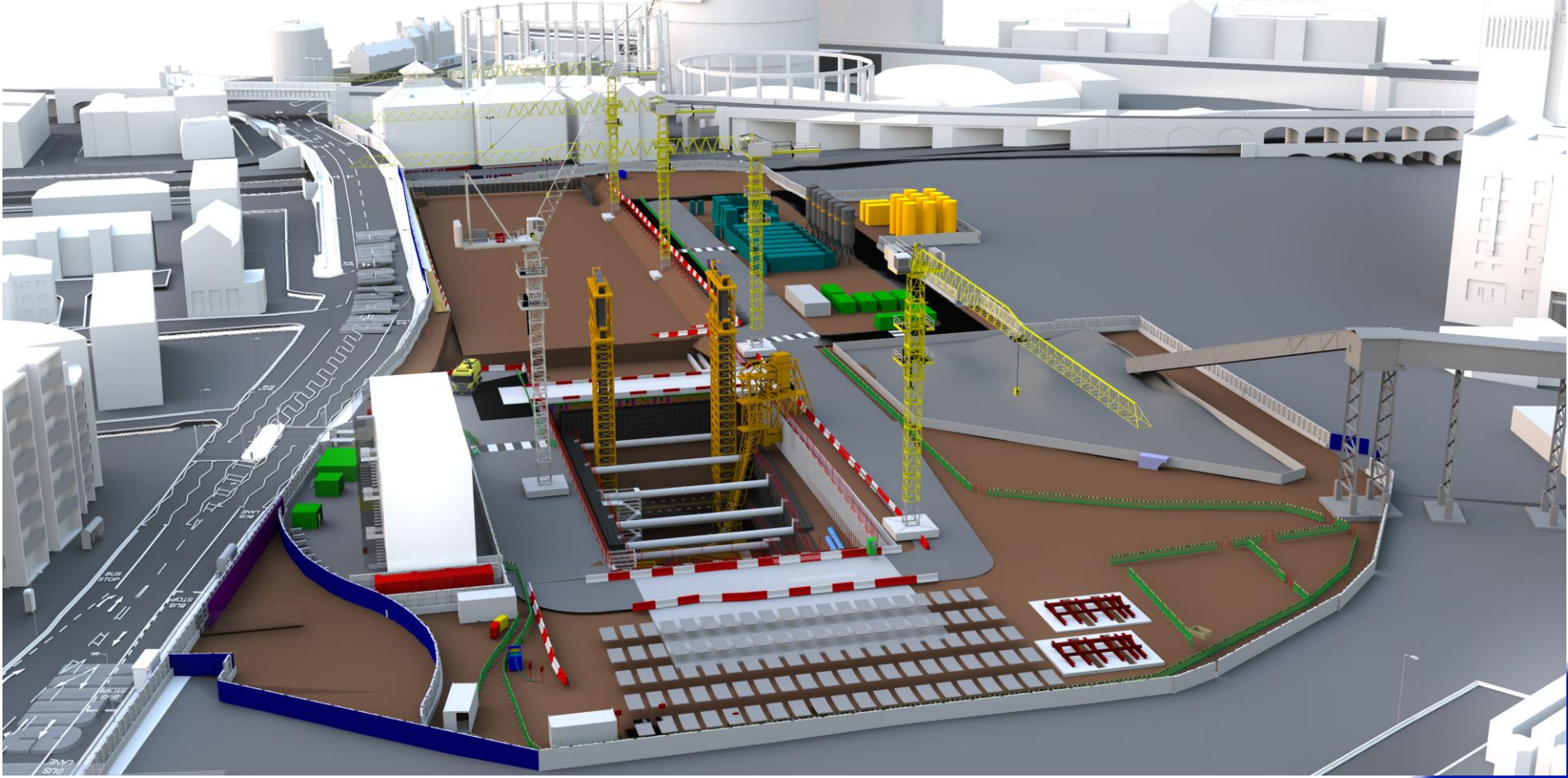
In total 76 deliveries:

- Northbound shield by 20/10
- Southbound shield by 21/10
- Southbound Back-Up by 2/12
- Northbound Back-Up by 30/3

Battersea Update Oct – Jan 2017



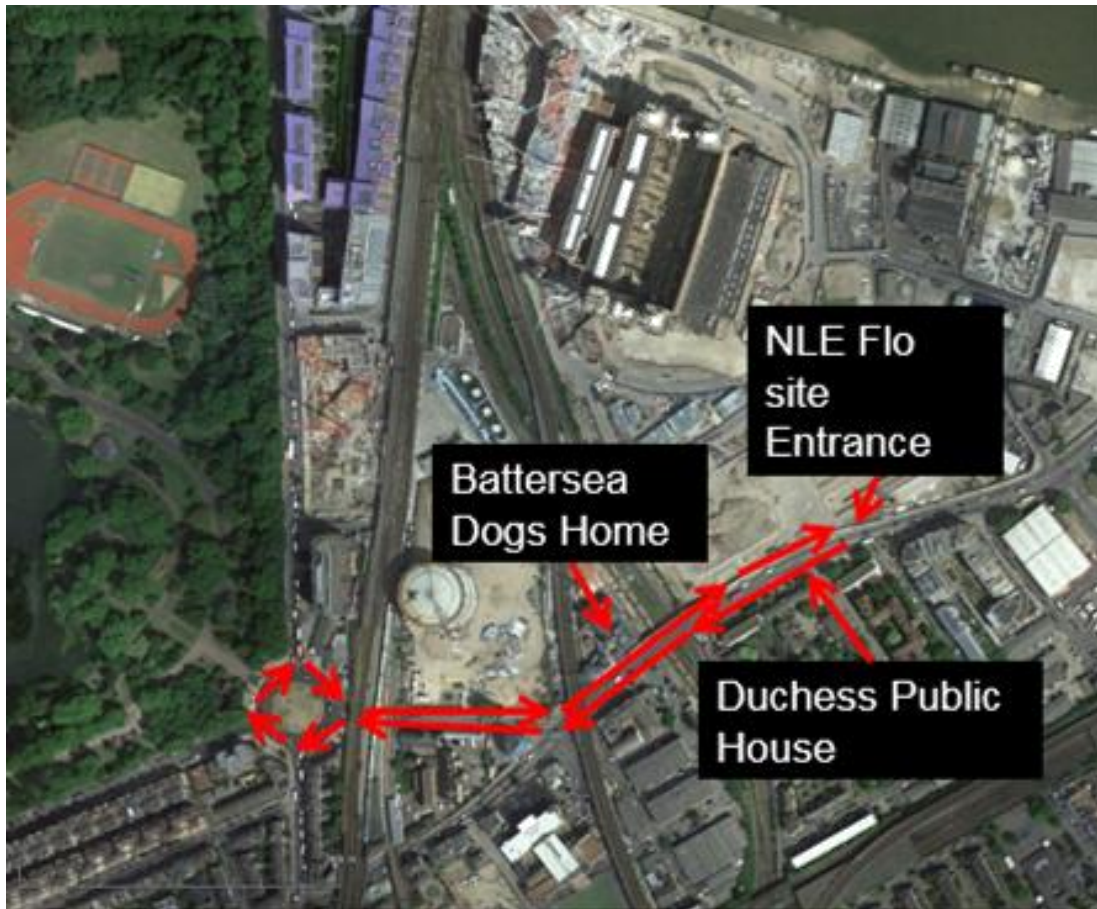
FERROVIAL AGROMAN
LAING O'ROURKE JV



Traffic Management / Logistics

- TBM continuing Abnormal loads, after 20.00hrs and “Normal” deliveries during the day
- Cementation Skanska continue with Abnormal loads at least twice a week and “Normal” during the day
- J Murphy to commence works outside NLE from 12-29 Oct. to facilitate UKPN pulling in cables for Thames Tideway (TBM Power)
- Excavation between the traffic islands = No right turn into site and left turn only when exiting site.
- Road sweeper to clean main road at least once a day, from Duchess Bridge to Kirtling St traffic lights.
- Flo to employ Road Sweeper full time at Battersea in the next couple of weeks.
- Reduce and limit any muck falling from vehicles leaving site. This will also enable us to clean Battersea Park Rd more often as a good will gesture.

Traffic Management / Up



As of 12th October up to and including the 29th October 2016, there will be NO RIGHT turn into or out of Battersea NLE Flo site. If you are approaching from Vauxhall you will need to carry on along Battersea Park Rd to the traffic lights just past Battersea Dogs Home. Turn right onto Prince of Wales Drive, continue to the roundabout, go around the roundabout back along Prince of Wales drive to the traffic lights. Turn left onto Battersea Park Rd and head back towards site. Turn left at the pedestrian lights to enter site.

When Exiting site YOU MUST TURN LEFT towards Vauxhall. There will be NO RIGHT TURN available. Please cascade this out to all relevant suppliers - hauliers & vehicle visitors relevant to our project.

Your Feedback



FERROVIAL AGROMAN
LANC O'BURKE JV

You Suggested	We Did
Opportunities for local organisations	NLE hosted a meet the buyer event in June with over 30 local business in the area.
More information to residents	Weekly email bulleting is now delivered every Friday
Light Pollution	NLE redirected the lights on the hoardings and site lighting is under review.
Integrated meetings with major developments in the area	NLE and Tideway are joining their CLG meetings. BPSDC on same date every 6 months
Keep Roads Clean	Road sweepers are working permanently Battersea Park Road Wheel washer being organised
Engagement with Local Schools	We continue to get work experience students from the three Boroughs and we have completed 266 days of summer placements
Request from a resident to start noisy work later on Saturdays.	The site team accommodated the most noisy activity to start later on Saturday. Also the road sweeper was instructed to start after 9 am on Saturday.
Petition to assist with the cleaning of the Silver Birch close top Battersea site	FLO got together with Tideway and commissioned an specialist company to clean the both Bridges.



Engagement Opportunities

- CLG meetings
- One to one meetings
- Drop in sessions
- School and Youth Engagement
- Stakeholder Activities
- LEAP group meetings
- Cycling safety Events

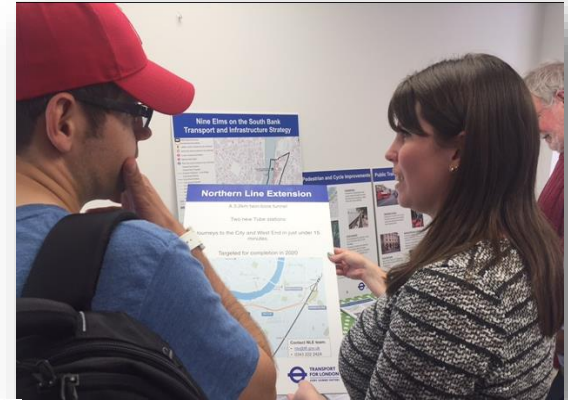


FLO cleans out the dirt

Major facelift to Network Rail bridges as part of a community initiative in Wandsworth



Nine Elms Communications Manager, Henry Ellis (centre) pictured with FLO's Ignacio Lopez, Carla Arnold and Claudia Quitian.



Ways to contact us

- It is important that calls are logged through the NLE 24/7 helpdesk on 0343 222 2424 Option 1
- Email nle@tfl.gov.uk
- Regular Drop In sessions
- Please visit:

<https://tfl.gov.uk/northern-line-extension>